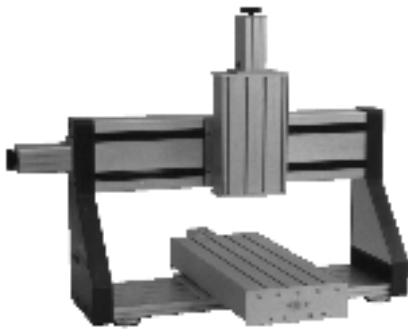


## FEATURES

- ◆ Heavy cast aluminum side plates support the axis above a work surface
- ◆ Home reference and far end limit switch with  $\pm 0.01$  mm repeatability
- ◆ Features 2 patented double linear rails and 4 patented double bearing blocks
- ◆ Fitted with plastic lip seals to guard against contaminants
- ◆ All models with stepper motor option feature 125 oz•in stepper motor, model HL2600M210001
- ◆ All models with servo motor option feature motor model HZ2600M1050XY3 with line driver optical rotary encoder, 1000 line
- ◆ Standard anti-backlash ball screw and nut, 16 mm diameter with 5 mm pitch
- ◆ Work surface is flat milled aluminum 220 x 175 x 8 mm with 8 drilled and tapped M6 mounting holes
- ◆ Choice of two travel lengths with two working heights
- ◆ Ready to accept Z-slide and standard-duty slide for XY, YZ and XYZ configurations



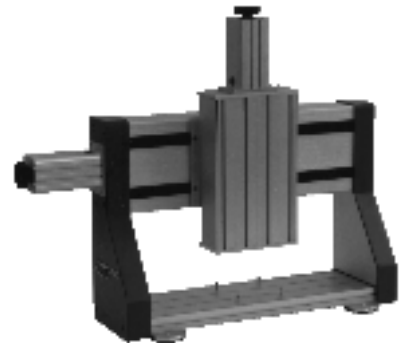
### EXAMPLE OF XYZ

Positioning system with bridge mounted Y-slide  
(X- & Z-slides not included)



### EXAMPLE OF XY

Positioning system with bridge mounted Y-slide  
(X-slide not included)

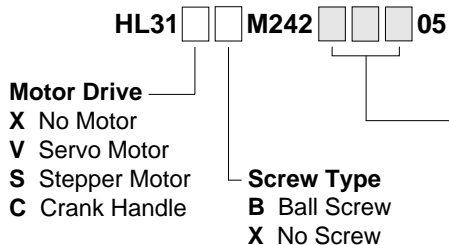


### EXAMPLE OF YZ

Positioning system with bridge mounted Y-slide  
(Z-slide not included)

Z MACHINES & SLIDES

### CATALOG NUMBER

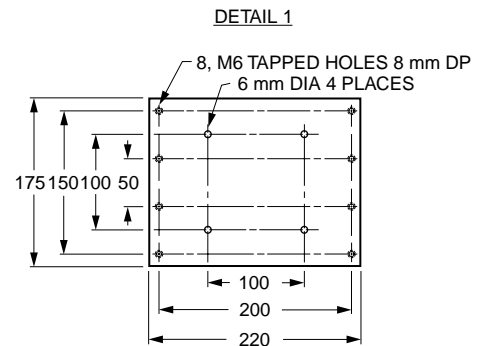
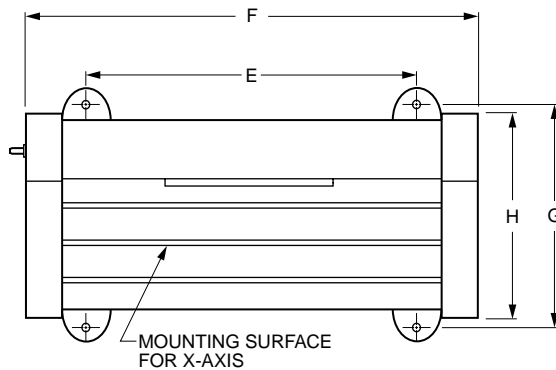
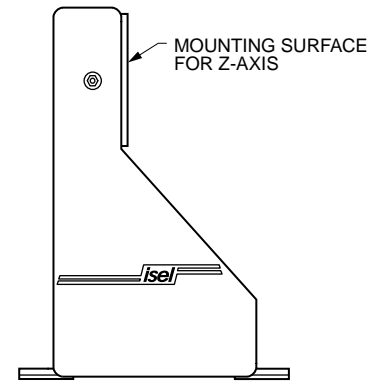
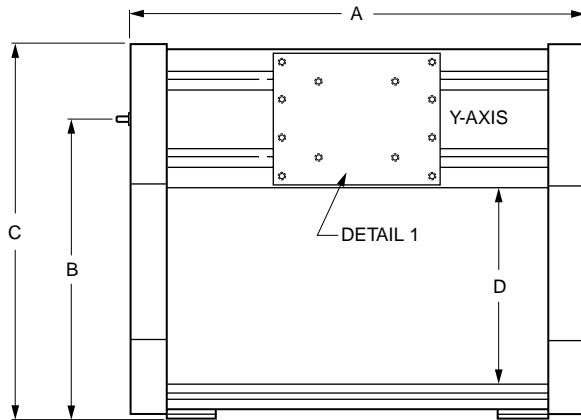


### BRIDGE MOUNTED SLIDE SELECTION

Model	Length mm (in)	Travel mm (in)	Height mm (in)
101	620 (24.4)	290 (11.4)	189 (7.4)
102	620 (24.4)	290 (11.4)	257 (10.1)
201	970 (38.2)	500 (19.6)	257 (10.1)

**EXAMPLE:** To order a Bridge Mounted Slide with Stepper Motor (S), 5 mm Pitch Ball Screw (B) & 500 mm Travel (201), the Catalog Number is HL31SBM24220105.

For mating connectors and cables, see page 166. For motor standoffs and couplings, see page 132.



Model	Travel mm	A mm	B mm	C mm	D mm	E mm	F mm	G mm	H mm
101	290	610	325	422	189	445	610	215	194
102	290	610	393	490	257	445	610	296	270
201	500	820	393	490	257	655	820	296	270

SPECIFICATIONS		
Repeatability	± 0.01 mm (± .0004 in)	
Accuracy	± 0.1 mm / 300 mm (± .004 in / 12 in)	
Max. Vertical Static Load	22.7 kg (50 lb)	
Motor Drives	Stepper	Servo
No Load Speed	127 mm / sec (5 in / sec)	152 mm / sec (6 in / sec)
Thrust Force at Low Speed	91 kg (200 lb)	113 kg (250 lb)
Resolution	0.0125 mm (.0005 in)	0.0025 mm (.0001 in)

**NOTES ON SPECIFICATIONS:** Stepper motor is model HL2600M210001 as described on page 152, operating in half step mode, with 4.5A / phase, 40V chopper driver. Servo motor is model HZ2600M1050XY3 as described on page 164, operating with 6A/80V chopper amplifier and 1000 line encoder operating in quadrature. These figures will, of course, vary with different loads, amplifiers and acceleration profiles provided by the controller.

2 MACHINES & SLIDES