

FEATURES

- ◆ Compact design suitable for general applications in horizontal or vertical mount
- ◆ Available with either 202 oz•in stepper motor or 120W servo motor
- ◆ Hardened, ground & flat milled Ø125 mm steel rotary surface
- ◆ Low backlash operation
- ◆ Large load capacity
- ◆ Ø23 mm hole through middle of rotary table
- ◆ Rigid cast aluminum body for durability
- ◆ Options include:
 - Magnetic brake
 - 3-jaw chuck
 - Ø490 mm aluminum utility disk



3-Jaw Chuck
HL5600M269060125



490 mm Diameter Aluminum Flat Disk
HL5600M269051500



CATALOG NUMBER

HL36 0M263

Motor Drive

- S Stepper Motor
- V Servo Motor

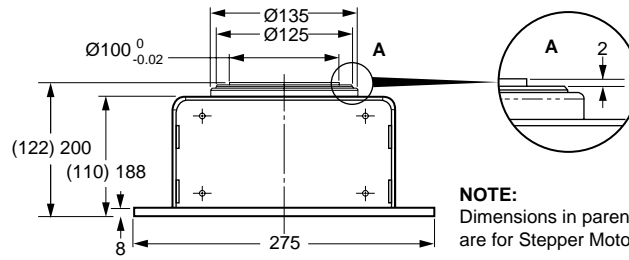
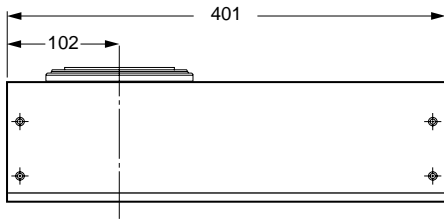
Brake

- 0 No Brake
- 1 24V DC Brake

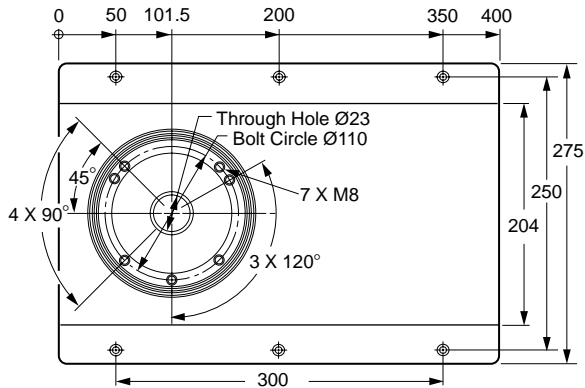
Output Reduction

- 0 1: 24
- 1 1: 52
- 2 1: 100

For mating connectors and cables, see page 166.



NOTE:
Dimensions in parentheses are for Stepper Motor Unit.



2 MACHINES & SLIDES

SPECIFICATIONS	
POSITIONING ACCURACY	
Runout of Face Plate	≤ 0.02 mm
Concentricity of Face Plate	≤ 0.02 mm
Concentricity of the Center Shaft	≤ 0.02 mm
MATERIAL	
Body	Aluminum Casting
Tracks	Hardened and Ground Tool Steel
Roll Barrel	Roller Bearing Steel
Setup Assembly	Any Position
Limit Switch	Reed Sensor
Operating Temperature Range	0°C to +70°C
Max. Force Load Perpendicular to Disc	5000 N (1125 lb) Brake Closed
Max. Torque Load on Disc about Disc Diameter	160 Nm (120 lb·ft) Brake Closed
Holding Torque of Magnetic Brake	55 Nm (40 lb·ft)

Motor Drive	Output Reduction	Resolution sec	Output Torque N·m	Output rpm	Max. Loads for Mounting Orientations (brake open) kg			
					Table:		Vertical	
					Horizontal Load:	Vertical	Vertical	Horizontal
Stepper Motor	1:24	135	17.5	50	80	30	60	
	1:52	62.3	38	23	120	40	80	
	1:100	32.4	75	12	150	40	80	
Servo Motor	1:24	54	45	125	100	30	60	
	1:52	24.9	98	57	140	40	80	
	1:100	12.9	188	30	170	40	80	