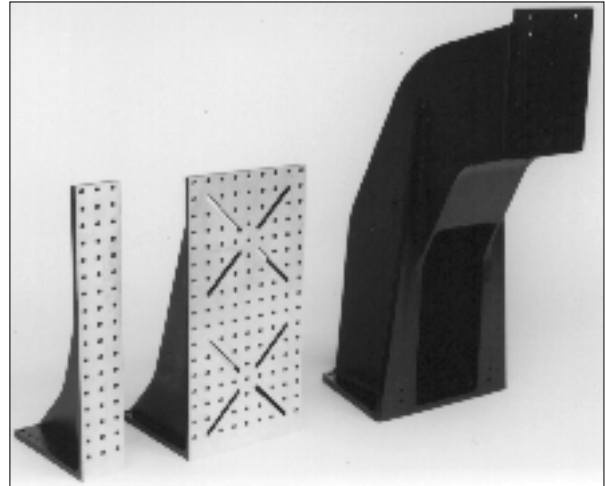


MOUNTING HARDWARE

- Right Angle Mounting Plates page 122
- Bearing Plates 1 & 2
for Narrow Profile Slide 2 page 124
- Bearing Plates 3 & 4
for Heavy-Duty Slide 2 page 125
- XY Mounting Plate 1
for Standard-Duty Slide page 126
- XY Mounting Plate 3
for Heavy-Duty Slide 2 page 127

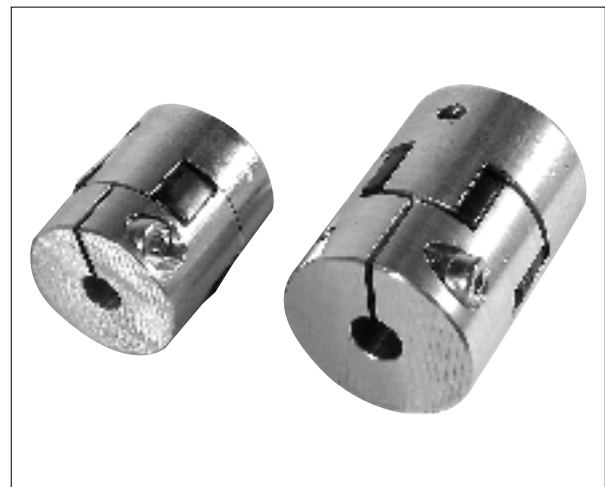


SPINDLES

- Variable High-Speed Spindle page 128
- Low-Speed Drilling Head page 129
- Low-Speed Milling Head page 129

COUPLINGS

- Machine Stands page 130
- Work Holding Components page 131
- Couplings & Motor Standoffs page 132
- Inertial Dampers page 133
- Cable Carriers page 133



FEATURES

- ◆ Die-cast aluminum
- ◆ Mounting surfaces milled flat to 0.05 mm.
- ◆ Perpendicular machined surfaces are accurate to 0.1 mm.
- ◆ Unmachined surfaces have black or silver powder-coated finish.
- ◆ All through holes and slots are designed for M6 screws.
- ◆ Mounting through holes are on a 25 mm grid.
- ◆ Wall thicknesses range from 12 to 15 mm to resist large forces and vibrations.
- ◆ Weights: HL6100M209110002 – 1.8 kg
HL6100M209110003 – 3.8 kg
HL6100M209110004 – 22.8 kg
- ◆ Suitable for machine components, machining mounting block, universal angular mount.
- ◆ Aluminum alloy plates feature high thermal conductivity and corrosion resistance.
- ◆ 45° mounting slots on Series 3 offer additional mounting flexibility.

Catalog Numbers

SERIES 2

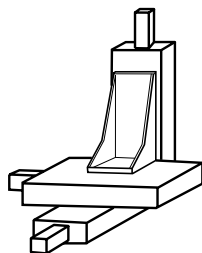
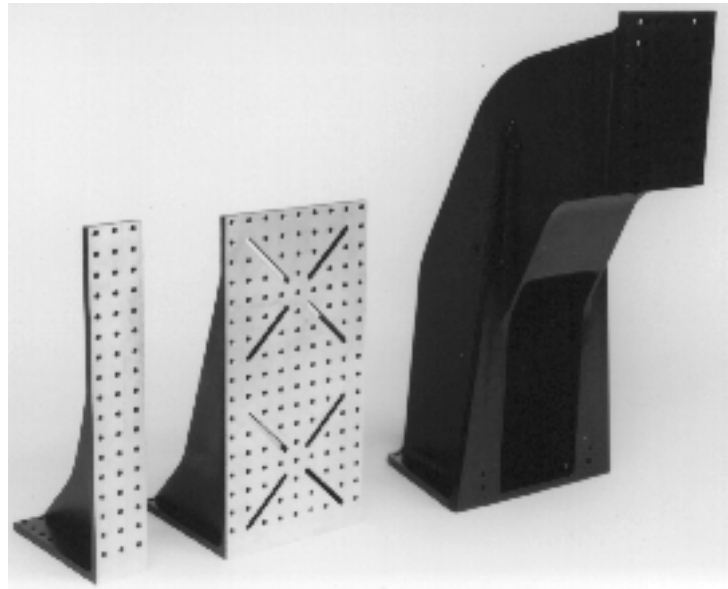
black, 446 x 221 x 75 mm
HL6100M209110002

SERIES 3

black, 446 x 221 x 221 mm
HL6100M209110003

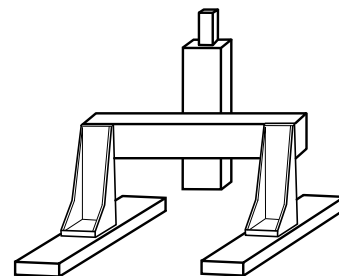
SERIES 4

black, 700 x 425 x 300 mm
HL6100M209110004



XYZ Positioning System

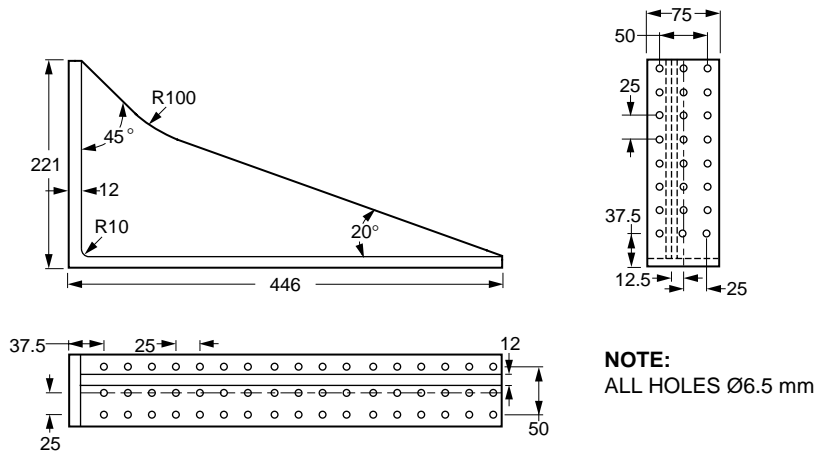
This system uses two standard-duty slides. A right angle bracket supports the Z-axis.



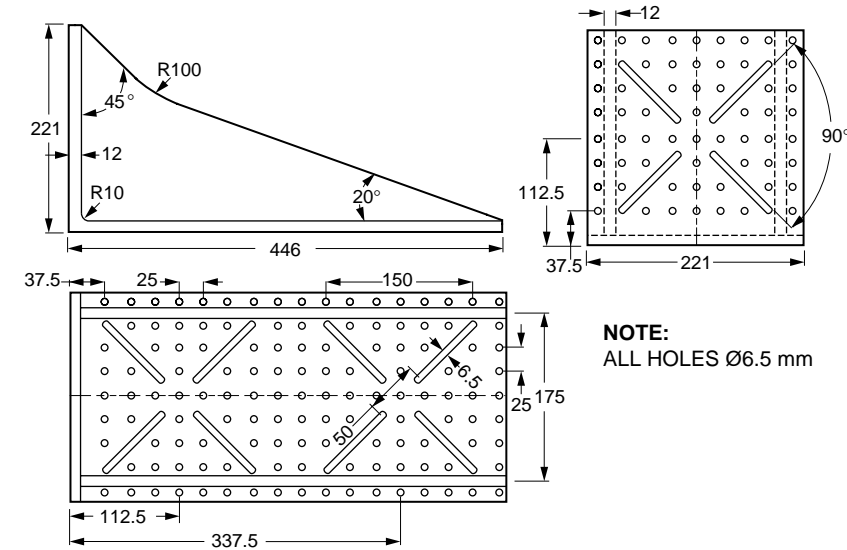
XYZ Positioning System with Bridge Mounted Y-Axis

This system uses four standard-duty slides and two right angle brackets.

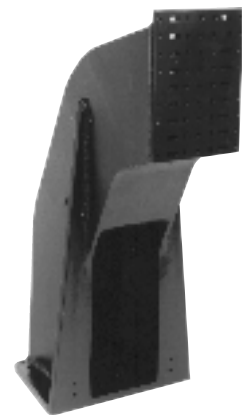
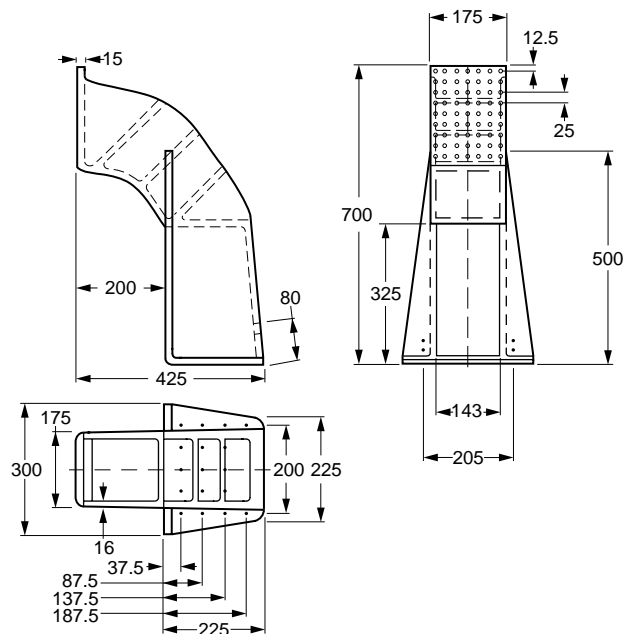
SERIES 2



SERIES 3



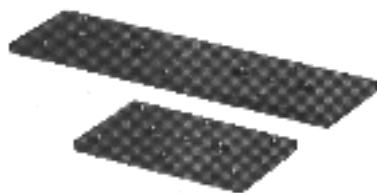
SERIES 4



2 MACHINES & SLIDES

FEATURES

- ◆ Constructed from dark finished, polished steel plate 8 mm thick
- ◆ Bearing Plate 1 can be used as a heavy-duty steel replacement bearing plate on Narrow Profile Slide 2 system
- ◆ Bearing Plate 2 can be used as an extended heavy-duty steel replacement bearing plate on Narrow Profile Slide 2 systems for special applications
- ◆ Both Bearing Plate 1 and Bearing Plate 2 can be used in original designs involving Techno Bearing Carriage 4 with either Series 2, Series 200, Series 400 or Series 500 Double Linear Rail Systems
- ◆ Each supplied with pretapped M6 mounting holes and $\varnothing 6$ (H7) dowel pin holes, as shown

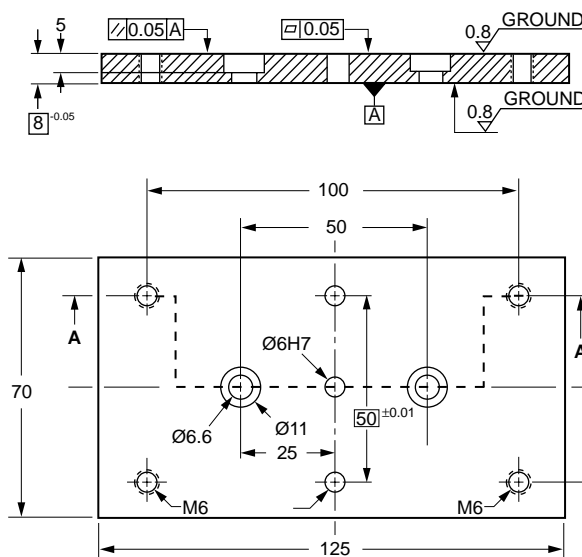


CATALOG NUMBER

Bearing Plate 1 **HL4700M277001**
 Bearing Plate 2 **HL4700M277002**

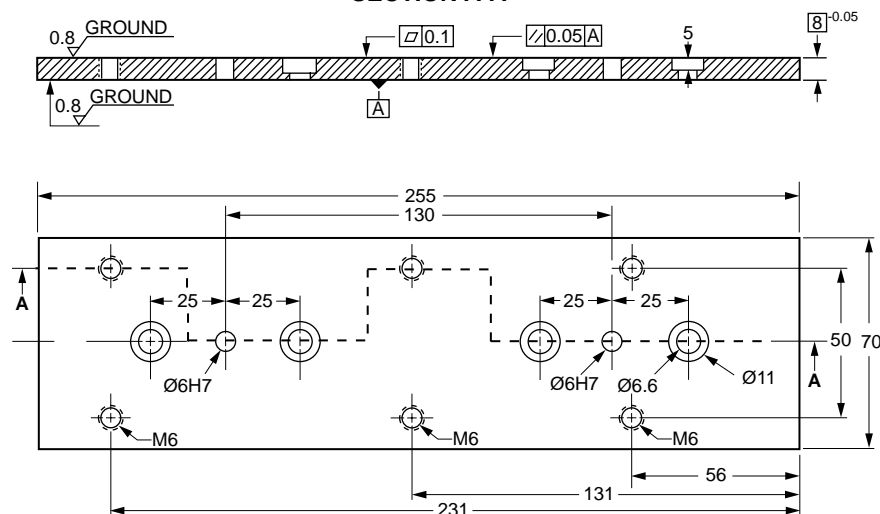
BEARING PLATE 1

SECTION A-A



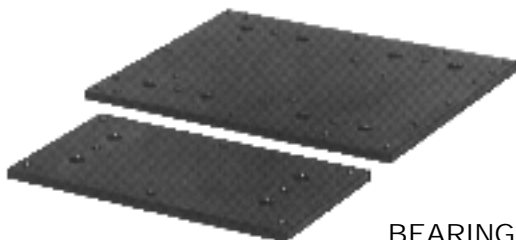
BEARING PLATE 2

SECTION A-A



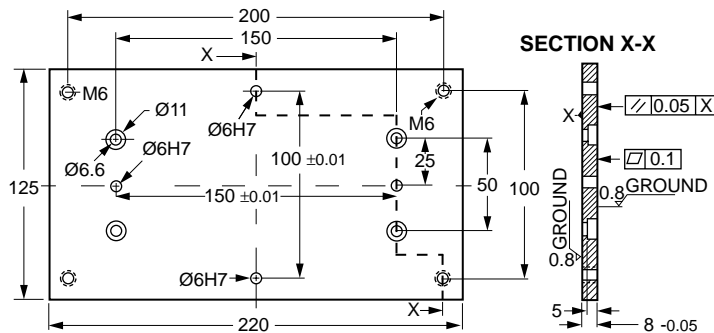
FEATURES

- ◆ Constructed from dark finished, polished steel plate 8 mm thick
- ◆ Bearing Plate 3 can be used as a heavy-duty steel replacement bearing plate on Heavy-Duty Slide 2 System and Double Slide System
- ◆ Bearing Plate 4 can be used as an extended heavy-duty steel replacement bearing plate on Heavy-Duty Slide 2 systems for special applications with four bearing blocks
- ◆ Bearing Plates 3 & 4 can be used in original designs involving Techno Bearing Carriage 4 with either Series 2, Series 200, Series 400 or Series 500 Double Linear Rail Systems
- ◆ Each supplied with pretapped M6 mounting holes and $\text{Ø}6\text{H}7$ dowel pin holes, as shown

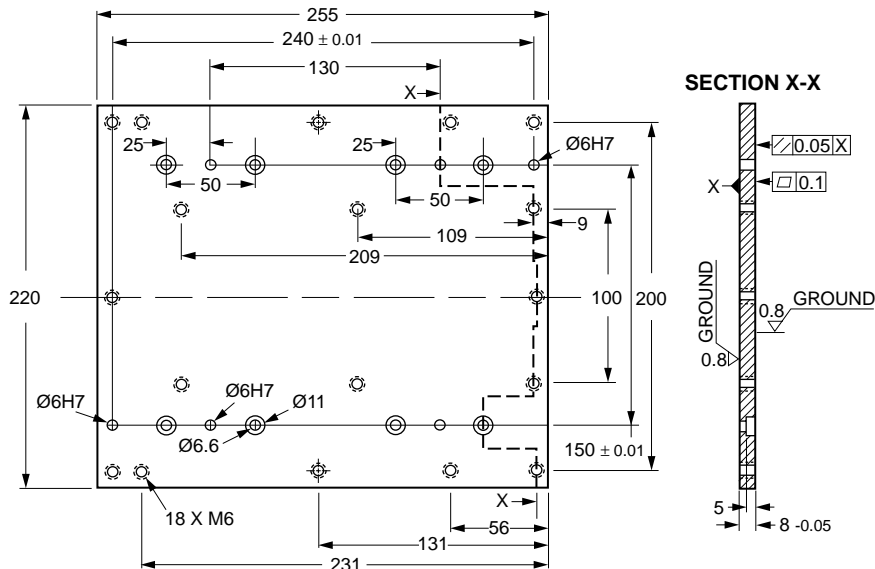


BEARING PLATE 3

CATALOG NUMBERS	
HL4700M277003	Bearing Plate 3
HL4700M277004	Bearing Plate 4



BEARING PLATE 4



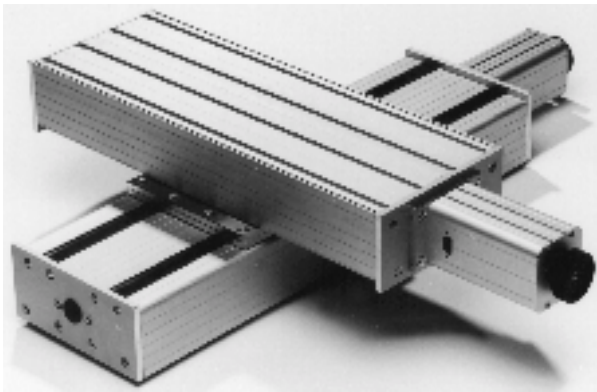
2 MACHINES & SLIDES

FEATURES

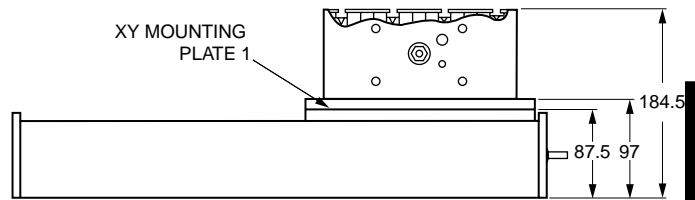
Two Standard-Duty Slides (page 74) can be mounted together to provide XY positioning tables.

Two Configurations:

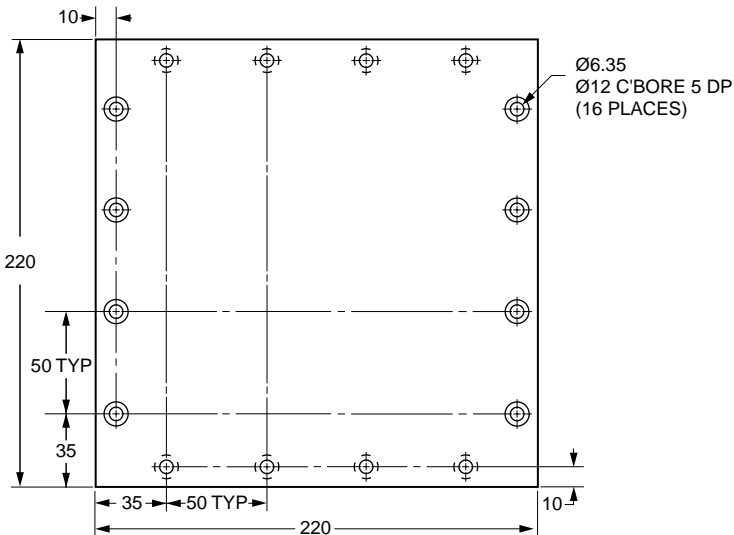
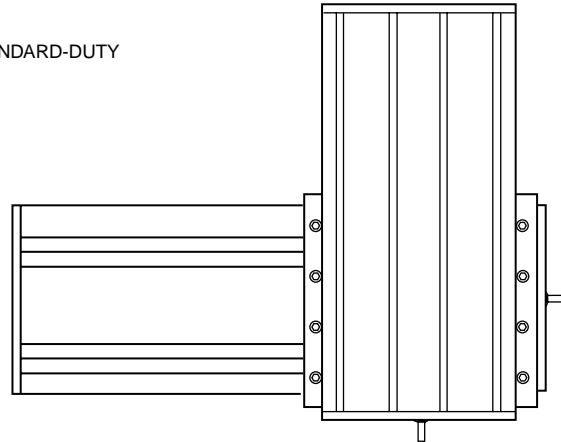
- ◆ bearing plate of bottom slide to the bearing plate of the top slide
or
- ◆ bearing plate of bottom slide to base of the top slide



Bearing plate to bearing plate mounting shown



STANDARD-DUTY



XY Adapter Plate for Standard-Duty Slides.
Provided with 16 pieces of M6 x 12 socket head cap screws and eight M6 square nuts.

Catalog Number	Part Description
HS4700MX-1	XY Mounting Plate 1



XY Mounting Plate 3 For Heavy-Duty Slide 2

Two Heavy-Duty 2 Slides (page 76) can be mounted together to provide XY positioning tables. The XY Mounting Plate 3 set is used in place of the two bearing plates to mount the two operating sides of the slides together. The set consists of two pieces, and is made of flat milled steel, 8 mm thick. Each slide must have a total of 4 bearing blocks, two per rail set. The plates are supplied with all mounting hardware including dowel pins to assure perpendicular mounting.



Catalog Number	Part Description
HS4700MX-3	XY Mounting Plate 3

