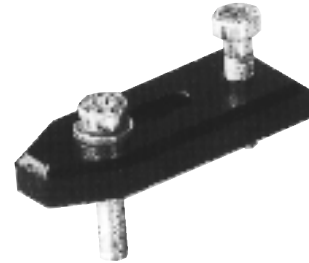


ADJUSTABLE TOGGLE CLAMP, made of steel, is ideal for holding odd shaped parts. The front screw can be positioned along the slot while the rear screw adjusts the pressure on the part. Both M6 screws and an M6 T-slot nut are included with the clamp.

Catalog Number
HL5400M290051



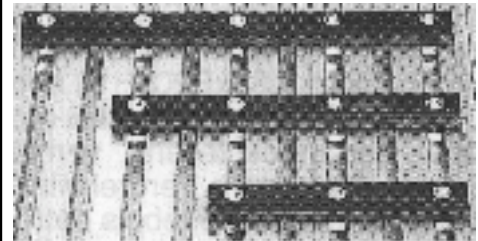
HEAVY-DUTY CAM LOCK CLAMP, made of black oxidized hardened steel. This clamp will provide up to 2500 N of clamping force with 100 N of actuating force. A 180 degree rotation of the locking arm will provide a clamp stroke of 4 mm. 15 mm high, 32 mm wide, 107 mm overall length. Provided with two-hole nut strip and screws to allow mounting to a T-slot.

Catalog Number
HL5400M290002



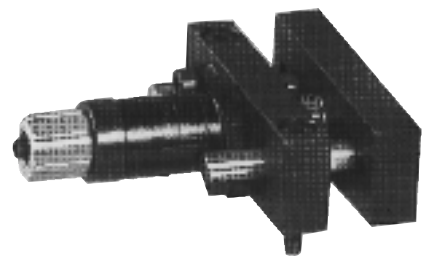
CLAMP BARS, made of plated steel, 10 mm high and 20 mm wide in lengths to 250 mm. To be used with either the cam lock clamps or the pneumatic clamps to make a work holder. Provided with screws and nuts to allow mounting to a T-slot.

Catalog Number	Length (mm)
HL5400M290020075	75
HL5400M290020125	125
HL5400M290020175	175
HL5400M290021225	225



PNEUMATIC CLAMP, made of hardened steel with a black oxide finish, provided with screws and nuts for mounting to the T-slots and a fitting for 6 mm OD, 4 mm ID plastic pressure tube.

Catalog Number	Clamping Force (N at 6 bar)	Maximum Stroke	Dimensions at min. length (mm)
HL5400M290010	50	10	20H x 65W x 75L



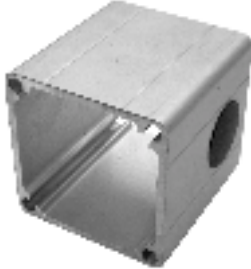
MANUAL VISES are made of steel with side slots for flexible mounting. The moveable jaws have side guides and the stationary jaws have both horizontal and vertical V slots for holding round objects. Both jaws have support surfaces for holding flat objects.

Catalog Number	Maximum Stroke	Overall Dimensions (mm)
HL5400M290055	65	152H x 130W x 45L
HL5400M290056	95	215H x 175W x 75L



MOTOR STANDOFFS

NEMA 23 Frame



HL4700M681699-60

For Use With:

- Heavy-Duty Slide 2 Page 76
- Narrow Profile Slide 2 Page 80
- Narrow Profile Belt Drive Slide 1 Page 82
- Blueline 1 Belt Drive Slide Page 84

Requires (4) M5 x 70mm Socket Head Screws - **HX6100M05070**

(Please make note this catalog number is for one bolt)

NEMA 23 Frame



HX4700MNEMA23-14

For Use With:

- Gantry III Page 64
 - Z-Axis Slides Page 66
 - Bridge Mounted Slide Page 72
 - Standard-Duty Slide Page 74
 - Narrow Profile Slide 1 Page 78
- (Includes Circuit Board and Home Switch)

NEMA 34 Frame



HL5500M218100

For Use With:

- Blueline 3 Belt Drive Slide Page 90
- ZF2 Belt Drive Slide Page 100
- ZF3 Belt Drive Slide Page 106

2 MACHINES & SLIDES

COUPLINGS



Shaft Coupling, jaw type with clamp hub, 1° Max. angular offset

Catalog Number	Bore mm	O.D. mm	Length mm	Maximum Parallel Offset mm	Maximum Torque N • m
HL5500M6380	8 - 6.35	30	40	0.15	7.5
HL5500M3473	6.35	20	30	0.20	3
HL5500M80127	8 - 12.7	20	30	0.13	3
HL5500M1214	12	40	60	0.1	10
HL5500M1212	12 - 12.7	40	60	0.1	10

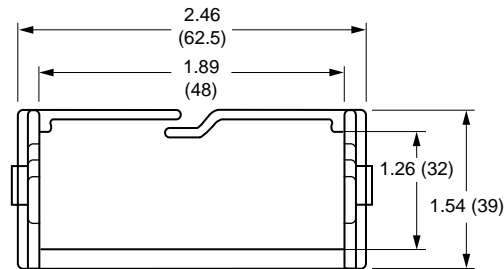
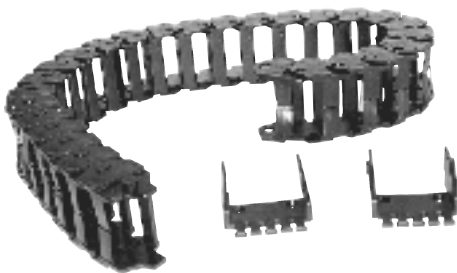
Inertial Dampers

The **Techno Inertial Damper** has been designed to provide smoother operation and stop loss of steps which may occur when stepper motors operate at resonance frequencies.



Catalog Number	Machines
H90Z12-17967	All except DaVinci
H90Z12-65A2902B	DaVinci only

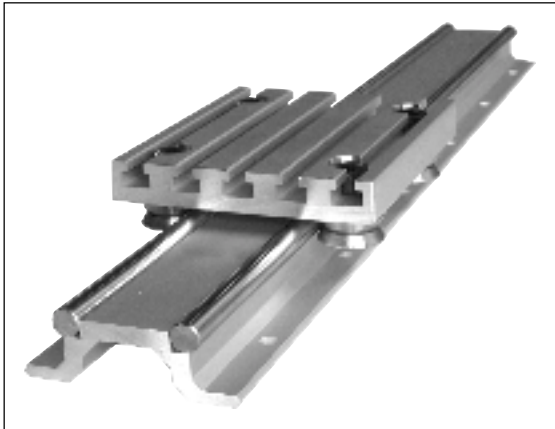
Cable Carriers



NOTE: 0.79" is maximum diameter of a single cable which can be used in this system.

Catalog Number	Cable Carrier Kits
HX3500-CCKIT1	Cable Carrier Kit (Model 130)
HX3500-CCKIT2	Cable Carrier Kit (Models 027, 040, 054 and 067)
HX3500-CCKIT3	Cable Carrier Kit (Model 015)
HX3500-E164060	Cable Carrier, 1 Foot Length
HX3500-117412PZ	Cable Carrier End Brackets (Set of Two)

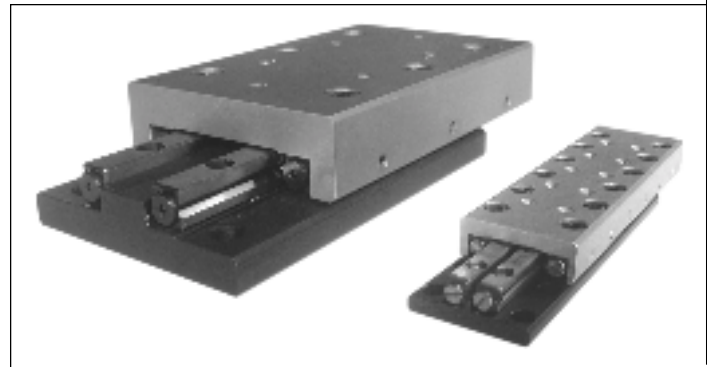
All kits include mounting brackets and flexible track.


Linear Rails and Bearings

For all types of automation applications. Stock lengths of rails to 3 m, carriages rated up to 10 m/s and loads to 2700 kg.

Ball and Cross Roller Slides

Loads from 1.5 lbs to 2032 lbs. Travel lengths from 0.5 inches to 12 inches. High accuracy, low friction and light weight.


Ball and Acme Screws

Inch and metric sizes in stock. Screw diameters from 1/4" to 1 1/2" and 10 mm to 25 mm with lengths to 3 meters. Nuts with threaded or flanged ends as well as anti-backlash models.

Aluminum Extrusions and Table Plates

For a variety of automation applications. Stock lengths to 3 meters and table plates up to 375 mm wide. A complete line of accessories and hardware to complete any project.

