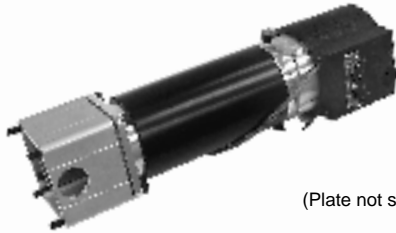




Servo Motor Assemblies

Servo Motor Module Format 1

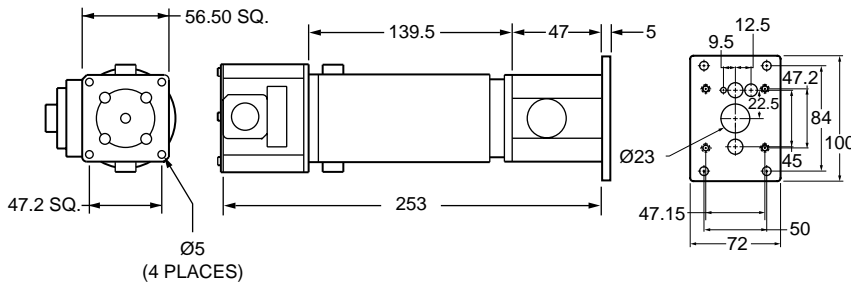
- ◆ Complete assembly with 1/4" to 1/4" shaft coupling



(Plate not shown)

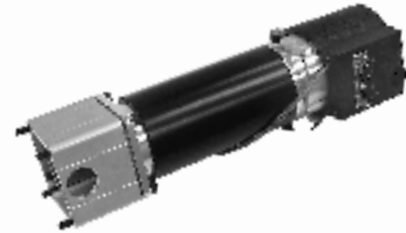
CATALOG NUMBER
HZ2600M1050XY3

For: Gantry III, Standard-Duty, Narrow Profile 1 and Narrow Profile 1 Belt



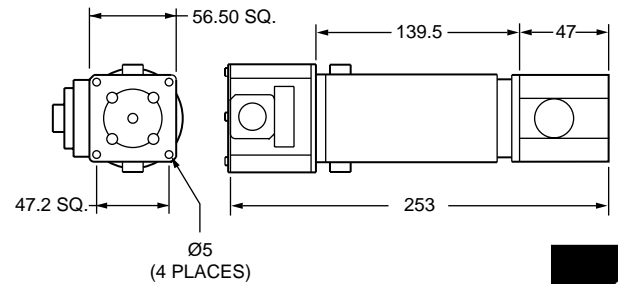
Servo Motor Module Format 2

- ◆ Complete assembly with 1/4" to 8 mm shaft coupling



CATALOG NUMBER
HZ2600M0242601

For: Heavy-Duty 2, Narrow Profile 2 and Blueline 1

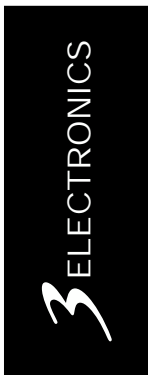


For Blueline 3, see page 91
ZF1, see page 96
ZF2, see page 100
ZF3, see page 106

Specifications	Units	Values
Continuous Stall Torque	oz•in	50
Peak Stall Torque	oz•in	350
Max. Terminal Voltage	V	60
Max. Operating Speed	rpm	6000
Length	in	9.96
Power	watt	120
Operating Temperature	°C	0 to 40

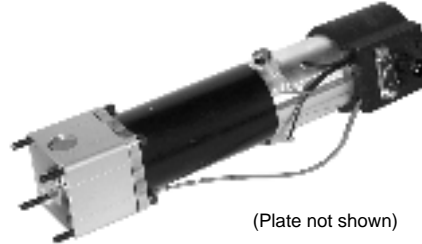
Winding Data		
Torque Constant ±10%	oz•in / amp	11.8
Voltage Constant ±10%	V / krpm	8.7
Resistance ±15%	ohms	1
Electrical Time Constant	mS	2.3
Mechanical Time Constant	mS	9.0
Max. Continuous Current	A	4.2
Max. Pulse Current	A	31
Armature Inductance	mH	3.3

Mechanical Data		
Rotor Inertia	oz•in•sec ²	.0062
Damping Constant	oz•in / krpm	.2
Thermal Resistance	°C / watt	4.2
Max. Armature Temperature	°C	155
Max. Friction Torque	oz•in	3
Max. Radial Load (1" from Bearing)	lb	10
Weight	lb	3



Servo Motor Module with Integral Brake

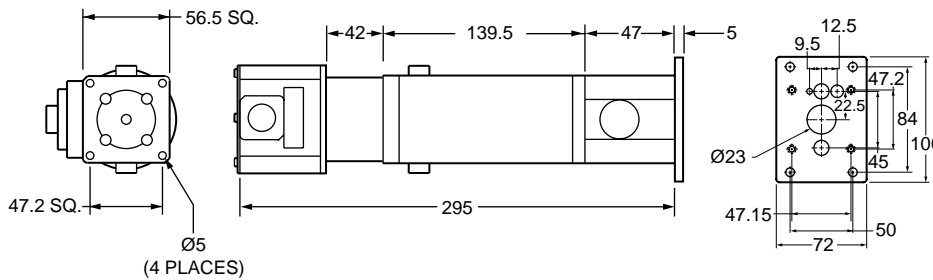
- ◆ Complete assembly with 1/4" to 1/4" shaft coupling



(Plate not shown)

CATALOG NUMBER
HZ2600M0242610

For: Z-Axis



Specifications	Units	Values
Continuous Stall Torque	oz·in	55
Peak Stall Torque	oz·in	400
Max. Terminal Voltage	V	60
Max. Operating Speed	rpm	3100
Length	in	11.61
Power	watt	120
Operating Temperature	°C	0 to 40

Winding Data

Torque Constant ±10%	oz·in / amp	26
Voltage Constant ±10%	V / krpm	17.5
Resistance ±15%	ohms	5
Electrical Time Constant	mS	3.1
Mechanical Time Constant	mS	7.5
Max. Continuous Current	A	2.2
Max. Pulse Current	A	17.8
Armature Inductance	mH	15.1

Mechanical Data

Rotor Inertia	oz·in·sec ²	.008
Damping Constant	oz·in / krpm	.25
Thermal Resistance	°C / watt	4
Max. Armature Temperature	°C	155
Max. Friction Torque	oz·in	3
Max. Radial Load (1" from Bearing)	lb	10
Weight	lb	3.5